

Tower Fan w. DC Motor
& Remote Control
Model: TFDC-46RC



Eligible for Quiet Mark accreditation as
"...one of the quietest Tower fans we have tested"

Instruction manual

[March 2019]

- ❖ DC Economy Motor
- ❖ Electronic Controls w. LED indicators
- ❖ Remote Control w. 3V battery (CR2032)
- ❖ Oscillation
- ❖ Sleep & Breeze Modes
- ❖ 32 speed options
- ❖ 1-2-4-8 hour timer
- ❖ Integrated Carry Handle w. RC cradle
- ❖ Power used indicator
- ❖ Aroma / scent box

Please keep safe for future reference

Introduction

Thank you for purchasing this Tower Fan w. DC Motor & Remote Control TFDC-46RC. This elegant tower fan is ideal for any location ~ home or office. It combines stylish good looks with exceptional cooling performance and quiet operation.

Safety Instructions

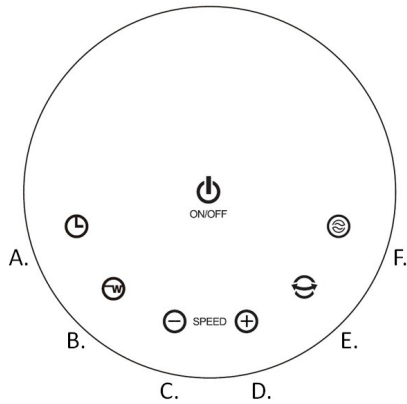
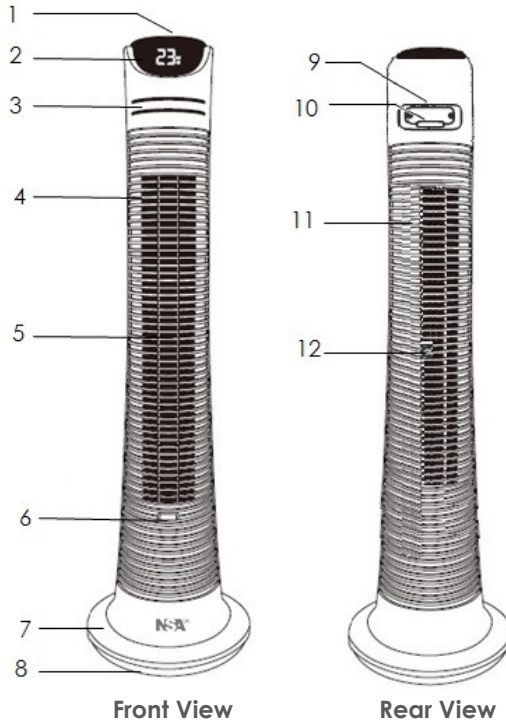
Please read this instruction manual before using your Tower Fan for the first time and keep safe for future reference.

CAUTION: Use the fan only as described in this manual.

1. Check the household voltage to ensure it matches the fans rated specification before using.
2. Always use this device in accordance with the instructions.
3. Close supervision is necessary when this fan is used near children and pets.
4. Do not allow children to play with any product packaging, such as plastic bags.
5. Always check the device for visible damage before use.
6. Repairs may only be carried out by an authorised repair centre; incorrect handling and faulty repairs may lead to danger and invalidate warranty.
7. This fan is not intended for use in wet or damp locations.
8. Never position the fan in an area where it may fall into a bath or other water container.
9. Do not use the equipment if it has any damaged parts, or it has fallen into water. Return the product to a service centre for examination and repair.
10. Do not insert any object into the grille whilst the fan is operating. It may cause damage to persons or property.
11. Always use both hands to carry this product.
12. This fan is intended for indoor, domestic & light commercial use only and is not to be operated outside.
13. Do not operate the fan near an open flame, cooking or heating appliance or hot surface.
14. Always use your fan on a firm, dry, level surface.
15. Disconnect the unit from the electrical outlet before cleaning, moving or storing.
16. To disconnect from the power supply, switch off the power, grip the plug and pull from the power socket. Never pull by the cord.
17. Arrange the power cord away from an area where it may be tripped over.
18. Never place the power cord under a carpet or rug.
19. This appliance can be used by children aged from 8 yrs and above and persons with reduced physical, sensory or mental capabilities or lack of experience and knowledge if they have been given supervision or instruction concerning use of the appliance in a safe way and understand the hazards involved.
20. Keep the remote control in a safe place when not in use or tucked into the special recess in the carry handle.

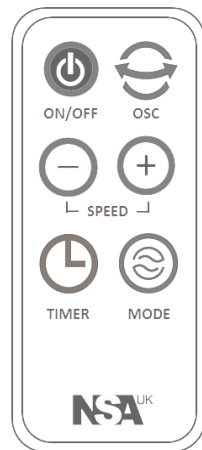
Parts Description

- 1 Soft Touch Control Panel for Manual Operation (see top view below)
- 2 LED Display – Speed & Power / wattage
- 3 LED selection indicators – Timer & Mode
- 4 Front Grille
- 5 Air Outlet
- 6 Aroma Tray / Scent Box
- 7 Fan Base Cover
- 8 Fan Base Plate
- 9 Carry Handle
- 10 Remote Control Recess
- 11 Back panel
- 12 Air Intake



- A. Timer
- B. Power Used/Watts
- C. Reduce Speed
- D. Increase Speed
- E. Oscillation
- F. Breeze/Sleep Mode

Manual Control Panel



Remote Control

NB: check packaging thoroughly for the remote control before disposal.

Assembly Method

- Please assemble correctly according to the following sequence.
- Please keep the original packaging for future storage.

<p>FIG 1</p>	<p>Assemble Base Plate</p> <ul style="list-style-type: none"> a. Remove the butterfly screws from the underside of the tower (Fig 3) and set aside. b. Insert the power lead between the front & back base plates. c. Make sure the holes of front base correspond with the holes of rear base, Fig.1. d. Click the two base plates firmly together as indicated.
<p>FIG 2</p>	<p>Fixing Base Plate to Fan</p> <ul style="list-style-type: none"> a. Gently up-end the fan. b. Insert the "D" shaped pillar on the fan into the "D" shaped recess in the base plate.
<p>FIG 3</p>	<ul style="list-style-type: none"> c. Align the butterfly screw sockets with the base plate and make sure the butterfly screws are connected firmly to the base.
<p>FIG 4</p>	<ul style="list-style-type: none"> d. Place the power cord into the clip slots. e. Carefully return the fan to the upright position. f. Ensure the fan base is positioned on a flat, stable surface. g. Plug into the mains supply ready for use.

Operating Instructions

The fan can be operated either manually using the control panel on the top of the fan or by using the remote control supplied with the product.

Refer to Page 3 of this manual for images of the manual control panel & remote control.



ON/OFF: Using the manual controls on the top of the fan or on the remote control press ON/OFF once to switch on the fan and press again to stop the fan from running.



SPEED: When the fan is first plugged into the electrical supply, the fan speed will be set at 16 – medium speed. Use the “+” button to increase the speed or “-” to decrease until you reach your preferred speed setting. There are 32 speeds to choose from.



The digital display on the front of the fan will indicate the speed selected with the fan symbol.



POWER USED: Press “W” button on the manual controls only to see the energy being utilised. The lower the fan speed, the lower the wattage consumed and the more economical the fan is to run.



OSC: Press OSC to select the oscillation function. The fan will swing in a 90° arc to circulate the air around the room. Press OSC again to turn off this function.



TIMER: Press TIMER button once to set the timer to turn off after 1 hour, press again to select 2, 4 or 8 hours of operation. When the selected time is reached, the fan will turn off. Use in conjunction with the Mode settings, Sleep or Breeze, detailed on page 6.

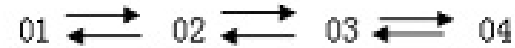


Operating Instructions (continued)



BREEZE MODE: This mode has four types of air cycles which simulates natural wind cycles or rhythms and varies according to the set fan speed ~ use the “+” or “-” buttons to select your preferred setting:

BREEZE



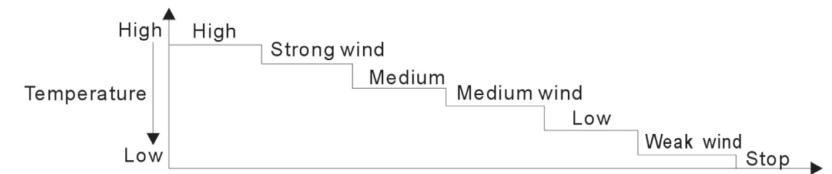
The digital display will indicate the selection chosen and show the fan symbol. To check the wattage used, press the “W” button on the manual controls to assess energy consumption



SLEEP

SLEEP MODE: This mode has four types of air cycles: strong, medium, medium-low and soft breeze ~ use the “+” or “-” buttons to set the fan speed preferred.

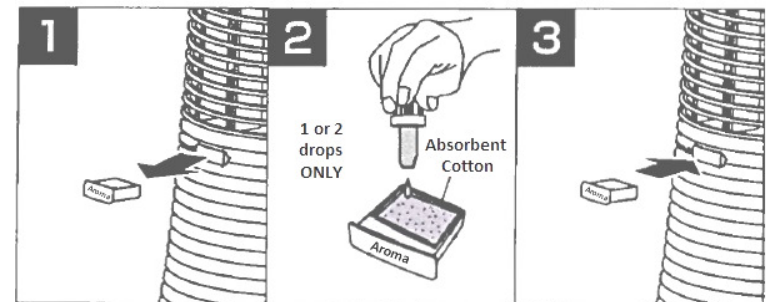
Whatever speed is chosen the fan will operate at this level, then it will step down through each level to the lowest and finally to a halt; it will then return to the chosen speed and repeat this circle continuously or until the timer duration is reached.



AROMA

AROMA: Take out the Aroma Tray from the front of the fan. Add one or two drops of Aromatherapy Oils† or perfume†, as desired, onto the absorbent cotton pad (do not over fill). Replace tray and turn on the fan.

A little scent will go a long way - follow package instructions where appropriate – do not saturate the cotton pad – as this may cause discoloration and/or damage the tray.



† Not provided with this product.

Accessory: Remote Control

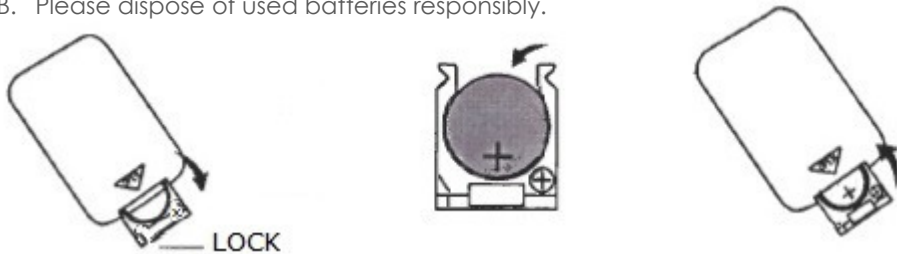
- ◆ Be sure to direct the remote control toward the receiver on the control panel.
- ◆ Use the remote control within 5 metres from the receiver. If the remote control is not directed towards the receiver, the effectiveness will be reduced.
- ◆ Do not place any obstacle between the receiver and remote control.
- ◆ Please treat your remote control with care. Knocking or dropping it will reduce its reliability.
- ◆ Please store the remote control safely when not in use or in the special recess in the carry handle.

NB. This remote control contains a button battery. If swallowed, it could cause severe injury or death in just 2 hours. Seek medical attention immediately.

How to install the battery of the Remote Control:

1. Open the cover of battery compartment according to the direction shown.
2. Install the CR2032 3V battery into the battery compartment. Take care of the polarity of the battery, which is indicated inside the compartment.
3. Close the battery cover.

NB. Please dispose of used batteries responsibly.



Compliance

This appliance complies with both the low voltage and electromagnetic compatibility directives. Its construction complies with current safety standards. We reserve the right to make technical changes without prior notice.

Cleaning & Care

- ◆ Unplug the appliance before cleaning.
- ◆ Do not use any chemical-based solutions for cleaning fan surfaces.
- ◆ In order to remove the dust from the protective fan grille use a vacuum cleaner upholstery attachment.
- ◆ Slightly moisten a cloth and then wipe off the surfaces of the fan.
- ◆ Ensure fan is completely dry before storage or reconnecting to electrical supply.
- ◆ Never immerse the fan or fan motor in water or other liquid.
- ◆ If the fan is not used for long periods, protect with a suitable cover after cleaning, then store in a dry place.


Recycling & Disposal

The packaging of your new fan has a recycle mark on it. Please dispose of it as recycled paper or by using the "Dual System".



Please Recycle



The  symbol on the product or on its packaging indicates that this product may not be treated as general household waste. Instead it should be handed over to the applicable collection point for the recycling of electrical and electronic equipment. By ensuring this product is disposed of correctly, you will help prevent potential negative consequences for the environment and human health, which could otherwise be caused by inappropriate waste handling of this product. For more detailed information about the recycling of this product, please contact your local council office, your household waste disposal service or the store where you purchased the product.

UK guarantee

24 months warranty valid only in respect of defects found to be due to faulty workmanship or material. Proof of purchase is required to validate the guarantee. This guarantee is no longer valid if the damage has been caused by a fall, alteration or repair by any unauthorised persons or if the product has been resold. This guarantee in no way affects your statutory rights.

Technical Data

Model No: TFDC-46RC
Voltage: 220-240V ~ 50Hz
Power: 22W
Ref: IM/TFDC46/1703/GU86AA
Dimensions: 900 (H) x 280 (W) x 280 (D) mm
Weight: N.W. 3.5kg
G.W. 5.1kg
Class II Product

